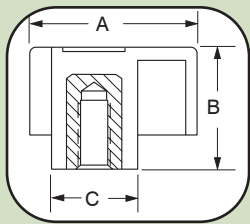


Three Arm

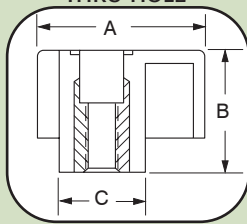
Available in heat-resistant phenolic material and impact-resistant thermoplastic with a textured surface. Aesthetically pleasing and exceptionally functional.



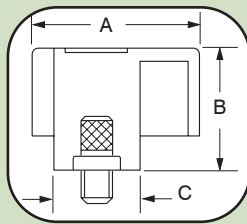
THREADED INSERT



THREADED INSERT THRU-HOLE



PROJECTING STUD



Material Type	Part No.	A Dia.	B Current Part Height	Part Height Capab.	C Hub Dia.	Threaded Female Insert													Threaded Male Stud*	Threaded Female Insert Thru-Hole	Square Valve Stem								
						8-32	10-24	10-32	1/4-20	1/4-28	5/16-18	5/16-24	3/8-16	3/8-24	1-2/13	1/2-20	8-32	10-24				10-32	1/4-20	1/4-28	5/16-18	5/16-24	3/8-16	3/8-24	1-2/13
TS	3022	7/8	3/4	.484-1.279	1/2	■	■	■	■	■	■	■	■	■	■	■	■	■	■	■	■	■	■	■	■	■			
TS	3025	1 1/8	5/8, 3/4, 7/8, 1 1/8, 1 3/16	.609-1.375	1/2	■	■	■	■	■	■	■	■	■	■	■	■	■	■	■	■	■	■	■	■	■	■	■	
TS	3035	1 1/2	3/4, 7/8, 15/16, 1, 1 1/4, 1 7/8	.734-1.375	5/8	▲	■	■	■	■	■	■	■	■	■	■	■	■	■	■	■	■	■	■	■	■	■	■	
TS	3040	2	3/4, 1, 1 1/4	.734-1.437	3/4	▲	▲	▲	▲	▲	▲	▲	▲	▲	▲	▲	▲	▲	▲	▲	▲	▲	▲	▲	▲	▲	▲	▲	■
TP	3036	1 1/2	7/8	.625-2.75	5/8	▲	▲	▲	▲	▲	▲	▲	▲	▲	▲	▲	▲	▲	▲	▲	▲	▲	▲	▲	▲	▲	▲	▲	
TP	3038	1 11/16	3/4	.75-1.378	21/32	▲	▲	▲	▲	▲	▲	▲	▲	▲	▲	▲	▲	▲	▲	▲	▲	▲	▲	▲	▲	▲	▲	▲	
TP	3041	2	1, 1 3/16	.625-2.74	3/4	▲	▲	▲	▲	▲	▲	▲	▲	▲	▲	▲	▲	▲	▲	▲	▲	▲	▲	▲	▲	▲	▲	▲	■
TP	3045	2 1/2	1 1/4	-	13/16	▲	▲	▲	▲	▲	▲	▲	▲	▲	▲	▲	▲	▲	▲	▲	▲	▲	▲	▲	▲	▲	▲	▲	
TP	3510	1 5/32	3/4	.500-1.627	1/2	■	■	■	■	■	■	■	■	■	■	■													
TP	3512	1 5/32	3/4	.500-1.627	1/2											■	■	■	■	■	■	■	■	■	■	■	■	■	

* For parts with male studs. LENGTH projecting below knob must be specified.
 ■ Currently Manufacture/Tooled
 ▲ Could Manufacture/Requires Tooling
 TS Thermoset
 TP Thermoplastic